

Bill Insert

May 2024



**WKRECC Annual Members' Meeting
Registration Information**
Support, Advocate, Educate

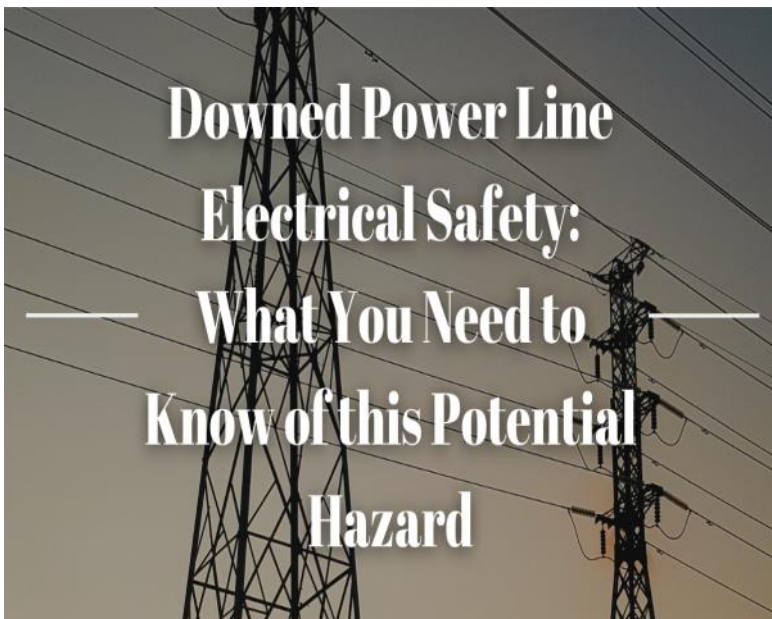
2024 WKRECC Annual Members' Meeting Registration Information—

Drive-thru registration will be **Friday, July 12, from 11 AM to 6 PM** at these locations:

- Calloway County High School
- Carlisle County High School
- Graves County High School
- Marshall County High School

Please bring your postcard with your QR code on it. These will be mailed to members prior to registration. During registration, you will be asked to vote on the following administrative motions: dispense with reading of the unapproved minutes of the previous meeting, vote to approve the Treasurer's Report and President's Report as printed in the July 2024 issue of Kentucky Living Magazine and vote on any board vacancies. To review these reports, prior to registration, go to wkrecc.com/Membership & Community/Annual Meeting.

Members may also register on **Saturday, July 13, from 10 AM to 12 Noon** at the **Mayfield Business office**. All registrants will be eligible for cash door prizes; winners will be announced during the meeting on July 13th beginning at 2 p.m. To watch live, go to wkrecc.com and look for the Annual Meeting link.



Stay Away, Stay Safe!

- Any downed or fallen wire should be treated as live and dangerous, and you should stay away. If you encounter a fallen wire, keep yourself and others away, call 911 and call the WKRECC office immediately. Also, do not touch anything or anyone the line may be touching, this includes debris, trees, and tree limbs.

Distance Is Your Friend

- Always keep your distance and presume a fallen line is energized and dangerous.

What To Do If A Line Falls on Your Car

- Call 911 and remain in your car until help arrives, unless it becomes unsafe (think water, smoke, or flames)
- If you must leave, avoid making contact with the vehicle and ground at the same time.
 - To exit, jump from your vehicle and land with both feet together.
- Shuffle or bunny hop away, keeping both feet in contact with each other until you are at least 100 feet away from your vehicle. If you run, your legs may bridge current from areas of high and low voltage, resulting in electrical shock.